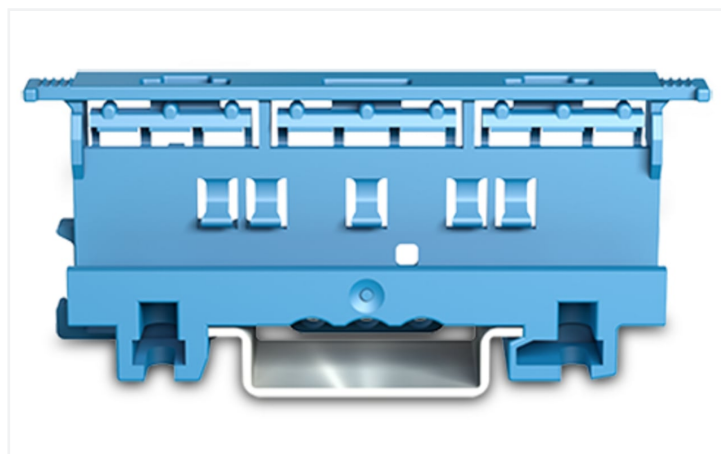
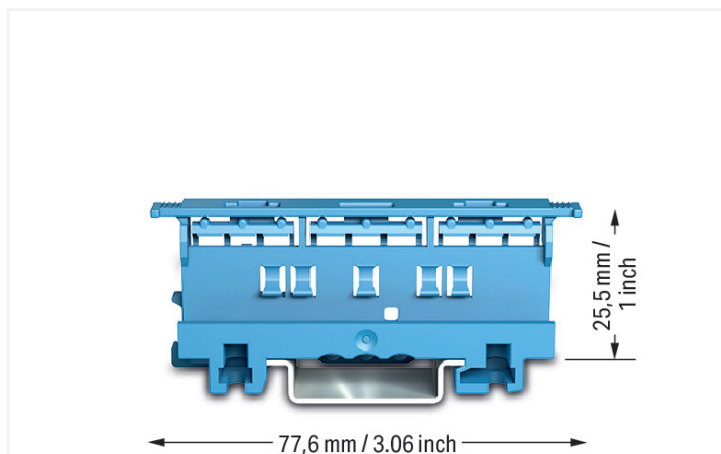


# Data Sheet | Item Number: 221-500/000-006

Mounting carrier; 221 Series - 4 mm<sup>2</sup>; for DIN-35 rail mounting/screw mounting; blue

<https://www.wago.com/221-500/000-006>



Color: ■ blue

## Physical data

Width	17.5 mm / 0.689 inches
Height	77.6 mm / 3.055 inches
Depth from upper-edge of DIN-rail	25.5 mm / 1.004 inches

## Mechanical data

Mounting type	DIN-35 rail Screw mount
Suitable	for 2-, 3- and 5-conductor 221 Series Splicing Connectors (4 mm <sup>2</sup> )

## Material data

Note (material data)	<a href="#">Information on material specifications can be found here</a>
Color	blue
Material group	I
Insulation material (main housing)	Polyamide (PA66)
Flammability class per UL94	V0
Fire load	0.294 MJ
Weight	9.8 g

## Commercial data

ETIM 9.0	EC002848
ETIM 8.0	EC002848
PU (SPU)	50 (10) pcs
Packaging type	Box
Country of origin	CN
GTIN	4055143833547
Customs tariff number	39269097900

**Environmental Product Compliance**

RoHS Compliance Status Compliant, No Exemption

**Downloads**

**Environmental Product Compliance**

**Compliance Search**

Environmental Product Compliance ↓  
221-500/000-006

**Documentation**

**Bid Text**

221-500/000-006	xml 3.16 KB	↓
221-500/000-006	docx 30.29 KB	↓

**CAD/CAE-Data**

**CAD data**

2D/3D Models ↓  
221-500/000-006

**CAE data**

ZUKEN Portal ↓  
221-500/000-006

**1 Compatible Products**

**1.1 Optional Accessories**

**1.1.1 Marking**

**1.1.1.1 Marking strip**



**Item No.: 210-833**  
Marking strips; 25 m on roll; 6 mm wide; plain; Self-adhesive; white

**1.1.2 Mounting adapter**

**1.1.2.1 Mounting accessories**



**Item No.: 222-510**  
Angled DIN-rail adapter; in combination with mounting carrier; 221-500 or 222-500; for DIN-35 rail mounting; gray



**Item No.: 222-505**  
Strain relief plate; for mounting carrier; 221 or 222 Series, can be snapped

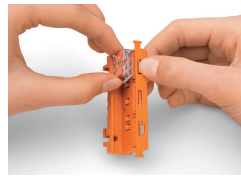
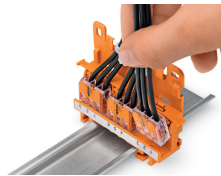
## Installation Notes

### Conductor termination



**CAGE CLAMP® connection:**  
Conductor termination with connectors fitted in a mounting carrier

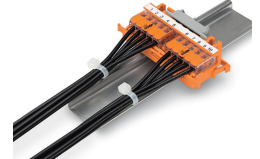
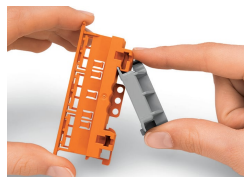
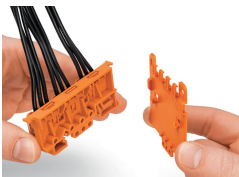
Removing a conductor.



Inserting a connector into the mounting carrier.

Inserting a connector into the mounting carrier.

Removing a connector from the mounting carrier.

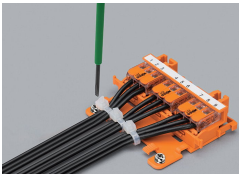


Securing a strain relief plate (222-505) to the mounting carrier.

Snapping the angled DIN-rail adapter (222-510) onto the mounting carrier.

Horizontal mounting on DIN-35 rail using an angled DIN-rail adapter

Horizontal mounting on DIN-35 rail using an angled DIN-rail adapter

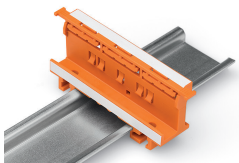


Horizontal screw mounting with strain relief plate on a flat surface

Vertical mounting with strain relief plate on DIN-35 rail

Strain relief via cable ties on the mounting carrier (transverse to the connectors' wiring direction) – clamping units labeled via marking strips (210-334)

Vertical screw mounting with strain relief plate on a flat surface



Mounting carrier on a DIN-35 rail

## Testing



Testing connectors via test slots on top of the carrier.

## Ex application



Carriers with a blue insulated housing are suitable for Ex i applications. Both clearances and creepage distances for the protection type "intrinsic safety Ex i" must be observed.